

South London Careers Hub newsletter



February 2023

Hi everyone

We hope you are keeping well! January and February have absolutely flown by, and it has been an incredibly busy few months for us. We have included some of our January highlights, tips for Gatsby Benchmark 8 and some fantastic opportunities to share with your students

SPOTLIGHT on Gatsby Benchmark 8 Personal Guidance

Every student should have an interview **before 16** and one **after they are 16** with a **qualified careers adviser** trained to a minimum of level 6. It needs to be on a 1:1 basis and last 30 minutes or more. You can train someone from within existing staff rather than buy it in from an external provider, however you would need to demonstrate **impartiality**. The government recommends that schools source their providers of personal guidance from the [professional register](#) hosted by the Career Development Institute. Details on qualifications and training can be found on the [CDI website](#). The [CDI's commissioning guide](#) provides practical information and advice to help schools commission independent careers guidance for pupils. Independent provider of Careers Guidance – [EDT](#)

Contents

- Gatsby Benchmark 8 Spotlight
- National Apprenticeship Week
- Apprenticeship Resources
- The Green Careers Tree
- Career Hub Youth Ambassadors
- Provider Access Policy-PALs
- FSQ & Start in London for Y7
- Opportunity: Palace for Life Construction Fair
- January Highlights –Amazing Employer Encounters
- SEND opportunities
- Pathways CTM opportunities
- Spotlight on a Merton Enterprise Advisor
- Introduction to the new EC for Kingston

Delivering Work Experience -Thanks for attending!

We had a great session on 26th January – Career leaders found it very helpful to hear the different models of delivery from our guests, Kiera from Richmond Park Academy, Giles from Coombe Boys and Simon from Southmoore Academy



'Thank you - was very, very useful! Brilliant models used - food for thought! Brilliant Simon - thank you Giles - that was fantastic! (Coloma Convent Girls' School)
'Useful as always, many thanks. Thank you all so much really great'(Richard Challoner School)

Upcoming dates

Calendar invites will be shared

16 March 3:30-4:30pm
Meeting the requirements of the Provider Access Legislation

29 March 3:30-4:30pm
Careers is Everyone's Business- Engaging Teachers & SLT

23 May 2023 3:30-4:30pm
Managing transition for SEND Students

29 June 3:30-4:30pm
How to Get the Best Out of the CL/EA Relationship



We have come to the end of fantastic week of Apprenticeship talks and workshops with employers across schools in South London signing up for employer talks and workshops. Employers from a range of industries including Construction, Sustainability, Hospitality, Health and Social Care and Real Estate took part to share the wonderful opportunities available in their organisations and sectors. Watch out for a summary of how it went in the next newsletter



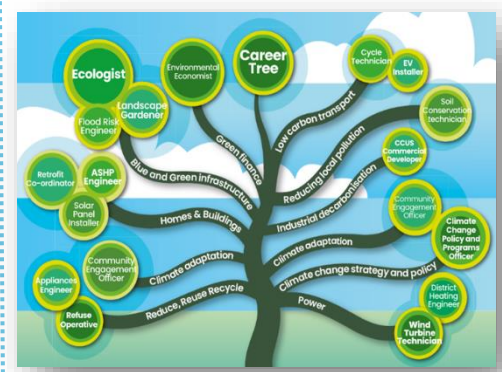
Amazing Apprenticeships

Great resources on the Amazing Apprenticeship website including teacher lesson plans and fact cards. Find out which employers are offering apprenticeships [here](#)

South London Partnership The Green Careers

Tree

A great LMI resource



Give parents and students access to careers in the Green Sector, pathways to those jobs and live vacancies by adding this fantastic resource to your school website



apprenticeships

Teachers	Young People	Parents & Carers
What's the difference between Apprenticeships and T-Levels?	What is an apprenticeship?	How does an apprenticeship compare to other qualifications?
How much can an Apprentice earn?	Is a Traineeship the same as an Apprenticeship?	What are the benefits of an Apprenticeship?
At what level can student study an apprenticeship?	When can I choose an Apprenticeship?	Where are Apprenticeships advertised?
I've heard of an Apprenticeship Levy - what is it?	In which subject areas can I study an Apprenticeship?	Which employers offer Apprenticeships?
Where can I direct my students for more information?	Where can I find an Apprenticeship?	What is a school leaving age?
	How do I apply for an Apprenticeship?	
	My Profile	

Apprenticeship fact cards for parents/carers, students and teachers on the [FREE Start platform](#)

Use the FREE teacher lesson plans and PowerPoints to Launch this with your Year 7 cohort to comply with the government requirement to include Year 7 in Careers Education Check out the scheme of work [here](#)

Apprenticeships are for everyone

DID YOU KNOW? There were 349,190 apprenticeship starts in England in the	DID YOU KNOW? In November 2022, there were 11,940 apprenticeship	DID YOU KNOW? Graduate level apprenticeships (Level 6) are growing every	DID YOU KNOW? More than 88,000 employers offered apprenticeships in
--	--	--	---

South London Careers Hub YOUTH AMBASSADOR NEEDED!!



The South London Careers Hub are looking for Youth Ambassador to ensure youth voice is at the heart of the work we do.

We would like to work with a mix of young people from schools and college across our five boroughs and hear their opinions and views on what is currently working well in careers education and the areas that the hub could focus on in the future.

We will have one meeting a term and these will be either virtually/ face to face or a hybrid model, to make sure these are as accessible and inclusive as possible.

Do you have a student who you would like to nominate?

Is there a young person at your school/college who would be keen to join our Youth Ambassador Group?

Please contact your EC to find out more and nominate a young person to be a voice in South London Careers Hub

PALS - Have you updated your Statutory Provider Access Policy on your school website to comply with new requirement for PALS?

Please ensure that your Provider Access Policy has been updated with the newer version following the PALS legislation that was released in January. This is a legal requirement and should be visible on your school website and ideally signed off by your Headteacher and Governor.

You can find a copy of the new version in the annex of this document

[Careers guidance and access for education and training providers](#)

Use the [Future Skills Questionnaire in Compass+](#) with..

Year 7 cohort to include them into your Careers programme as per the new government requirements

Year 10 cohort to help you gather student aspirations to plan your work experience programme



PALACE FOR LIFE FOUNDATION

What is the Palace for Life foundation?

Palace for Life Foundation is the official charity of Crystal Palace F.C. which has been working with the south London community for over 25 years. They use the power of football and the Palace brand to change the lives of young people across south London, particularly the most hard-to-reach and hard-to-help.

Palace for Life are hosting a 'Kick Off into Construction' event at Selhurst Park.

Please invite your students who are over 16 to their open evening for the opportunity to receive:

- CV and Interview advice from industry experts
- Employment and Training Opportunities
- Gain insight into construction, real estate, facility

This event is for **16+ years old** and a range of abilities.

Dates: Wednesday 15th February - Time: 4pm to 7pm

Sign up via this link: [Kick Off to Construction - Sign Up Form](#)



Employer Encounters are for everyone Strathmore School & Richmond Hill Hotel



The impact of careers education on young people with special educational needs (SEN) should never be underestimated.

In January, we partnered with Richmond Hill Hotel and hosted two fantastic Employer Encounters which took place at two of Strathmore School's sites. The amazing team from the hotel delivered exciting and interactive sessions for Strathmore students, who have complex special educational needs.

These sessions were carefully planned between us to ensure that they were accessible, meaningful and (most importantly) fun! Particular attention was paid to food hygiene and the importance of having clean hands and surfaces. Another focus was identifying what sort of activities would work best for different learners and their varied level of ability.

The learners worked with the chefs to prepare pancakes and sweet and savoury tarts, so for some, the focus was repetitive movements such as mixing and stirring. Others were able to listen to chef's instructions and confidently fill pastry cases with fillings and add toppings to them.

The key success was that we were able to accommodate all learners and their learning styles. It was wonderful to see their engagement and hear their positive feedback after wards – especially about the food!

It can be difficult to engage employers to work with learners with SEN. There is often anxiety around it, from understanding complex needs to using the right language.

It is hard to always get it right, but fear of getting it wrong shouldn't be a deterrent for organisations to work with or hire people with special educational needs. Part of our work at the South London Careers Hub is to encourage this level of engagement and facilitate impactful connections between schools and local businesses.

We are looking forward to building on this success and using it as a blueprint for other schools and colleges across South London. Get in touch with your EC.

*Thank you for coming to Strathmore School! The students really enjoyed your knowledge, experience, and attitude.
You were all very friendly and very supportive to all our students.
- Teacher, Strathmore School*



"Fun", "Amazing", "Happy"
Student feedback, Strathmore School





Going Behind the Scenes: A fantastic Work Insight in Sutton



In January we had the pleasure of taking students from Sutton Tuition & Reintegration Service out on an exciting Work Insight. We partnered with the wonderful Gemstage Ltd a specialist scenery company. We were excited to be working with such a creative organisation, especially as it is often difficult to find opportunities for young people in the 'Arts' industries.

Students were able to learn about the tools, techniques and skills needed to produce a set for some of our favourite West End shows such as The Lion King, Matilda and 2:22 A Ghost Story.

A big thank you to Gemstage and the amazing scenic artists, Jacky and Boston, for delivering an insightful and interactive session!



"I like the fact it was okay to make errors, less pressure and more freedom" Student, Year 11

SEND Spotlight



Fairshot's cafe supported internship programme

online on Monday 13th February at 6-7pm

[Click here to join the meeting](#)

More information: <http://www.fairshot.co.uk/>

Mencap Kingston & Richmond Supported Internship Open Day (in-person)

Fri, 3 March 2023, 14:45 – 16:45

Kingston URC Church (Room 11)

Eden Street Kingston upon Thames KT1 1HZ

Register on [eventbrite](#) now



Virtual Insight Event with BT

Mon 13 Feb 2023

Careers in Healthcare Science & Pharmacy

Wed 15 Feb 2023

Non-Clinical Careers in Healthcare

Thurs 16 Feb 2023 |

10:00-15:00

For more event information click [here](#)

A huge welcome to our Enterprise Coordinator for Kingston who joined the team in January



Hi everyone. A little bit about my background. I have project managed the delivery of successful schools in challenging circumstances with a specialism of enterprise and entrepreneurship. As a former DFE adviser I was responsible for matching business sponsors and trustees to multi academy trusts. More recently I worked in executive search to recruit outstanding values-led executives and non-executives and served as a trustee and governor. I live in the local area, and I am looking forward to building strong relationships with Careers Leaders and Enterprise Advisers. It's been great visiting Coombe Boys, Tiffin Girls, Hollyfield, Tolworth Girls and Kingston College. I loved the career notice board display at Tolworth Girls' School focussing on apprenticeships and I am looking forward to attending their careers fairs.

I am keen to visit all the schools in Kingston and planning to set up regular networking events for interested CLs and EAs to share experiences and best practice.

sally.lawson-ritchie@southlondonpartnership.co.uk

<https://www.linkedin.com/in/sally-lawson-ritchie-02666476/>

Enterprise Adviser Spotlight

I'm Vanessa, I work as a Campaign Executive at Financial Times and volunteer as an Enterprise Adviser for Merton. Outside of work, I've always enjoyed helping young people find opportunities. This started through @cityconnectldn, a resource network I started in 2018 to positively impact Gen-Z.

My role as an Enterprise Adviser will give me the chance to give back to young Londoners from all backgrounds so they can access the opportunities the capital has to offer. As someone who considers themselves to be a future leader, this is a great way to join the collective effort towards positively changing our city.

I started off my role as Enterprise Adviser for Merton with an invite from my secondary school, Ricards Lodge High school in Wimbledon, to share my career journey with Year 11s in an assembly. As someone who was once in their shoes, it was great to see how useful they found hearing from someone who was once in their position. I'm looking forward to continuing my work as volunteer Enterprise Adviser and impacting young lives across London city.

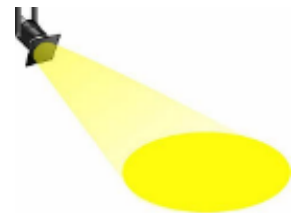
The 2023 Global Talent Playbook

Keep up to speed with the changing world of work to better inform your students in understanding LMI

The world of work has been shifting quickly, with the accelerated demand for things like digital, AI and green skills – Lightcast's International Research Director, Layla O'Kane, will be analysing many of the workforce trends we're seeing across the world –

Webinar on 22nd February.

Register for the webinar here



Utilising the whole school community...

Reach out to your alumni network and parent community to become Enterprise Advisers for your school. Get in touch with your Enterprise Coordinator for more information and support with this.